

PLAIN CITY
BLOCK 11, PLAT A

TAXING UNIT: 21

SCALE 1" = 50'

SEE PAGE 38

14

2500

NORTH

STREET

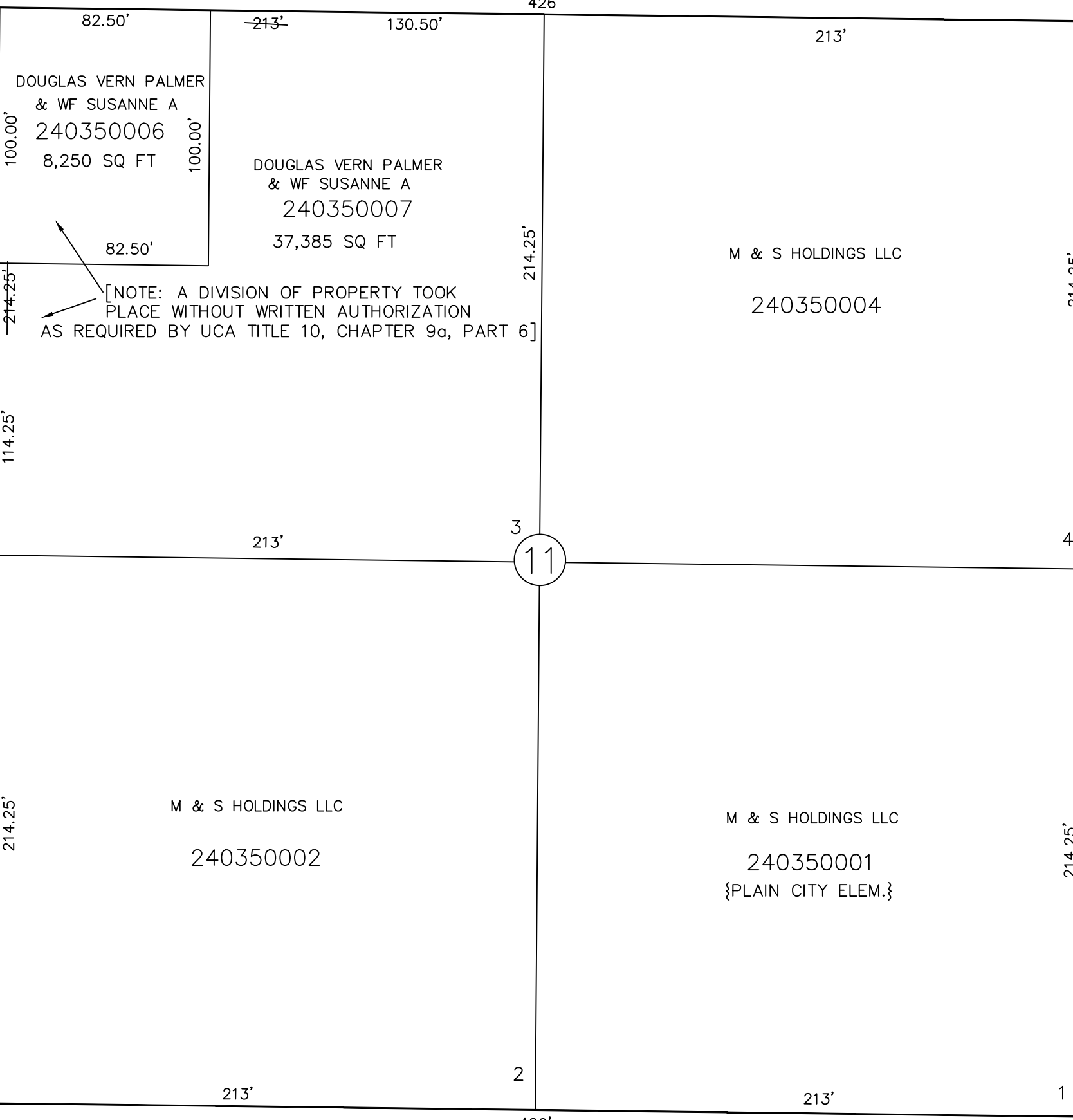
S 89°17' E

STREET

WEST

4425

N 0°27'30" E



STREET

WEST

4350

N 0°27'30" E

SEE PAGE 34

10

SEE PAGE 36

12

8

SEE PAGE 32

SEE ORIGINAL DEDICATION
PLAT OF PLAIN CITY IN
BOOK 5, PAGE 80 OF RECORDS.